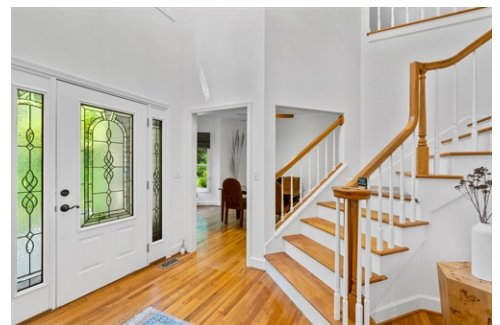


## Biltmore Park



\$ 850,000



19 Bent Oak Lane, Asheville, NC 28803

- » Beds: 4 | Baths: 2 Full, 1 Half
- » MLS #: 4030671
- » Single Family | 2,591 ft<sup>2</sup> | Lot: 25,700 ft<sup>2</sup> (0.59 acres)
- » Outdoor pool, playground and walking trails
- » Eclectic blend of contemporary and traditional styling
- » More Info: [19BentOakLane.com](http://19BentOakLane.com)



**LeNoir Medlock**  
(828) 258-2953 (office)  
(828) 691-9981 (cell)  
[lenoirm@preferredprop.com](mailto:lenoirm@preferredprop.com)  
<http://www.PreferredProp.com>

  
*Preferred Properties*  
Preferred Properties Of Asheville  
39 Woodfin Street  
Asheville, NC 28801  
(828) 258-2953

Located in the Braeside section of Biltmore Park, an established and vibrant neighborhood in South Asheville, this two story 1993 home has 4 bedrooms and 2.5 baths and is an eclectic mix of contemporary and traditional styling. 19 Bent Oak boasts 21st century functioning systems with geo-thermal heating, induction cooking, on-demand hot water and the house is solar hot water ready. Located on a cul-de-sac street, the lot is over half of an acre with privacy fencing, native landscaping and plenty of level yard. Take yourself into the future with efficient technology.

